



# NEW ADMINISTRATION BUILDING





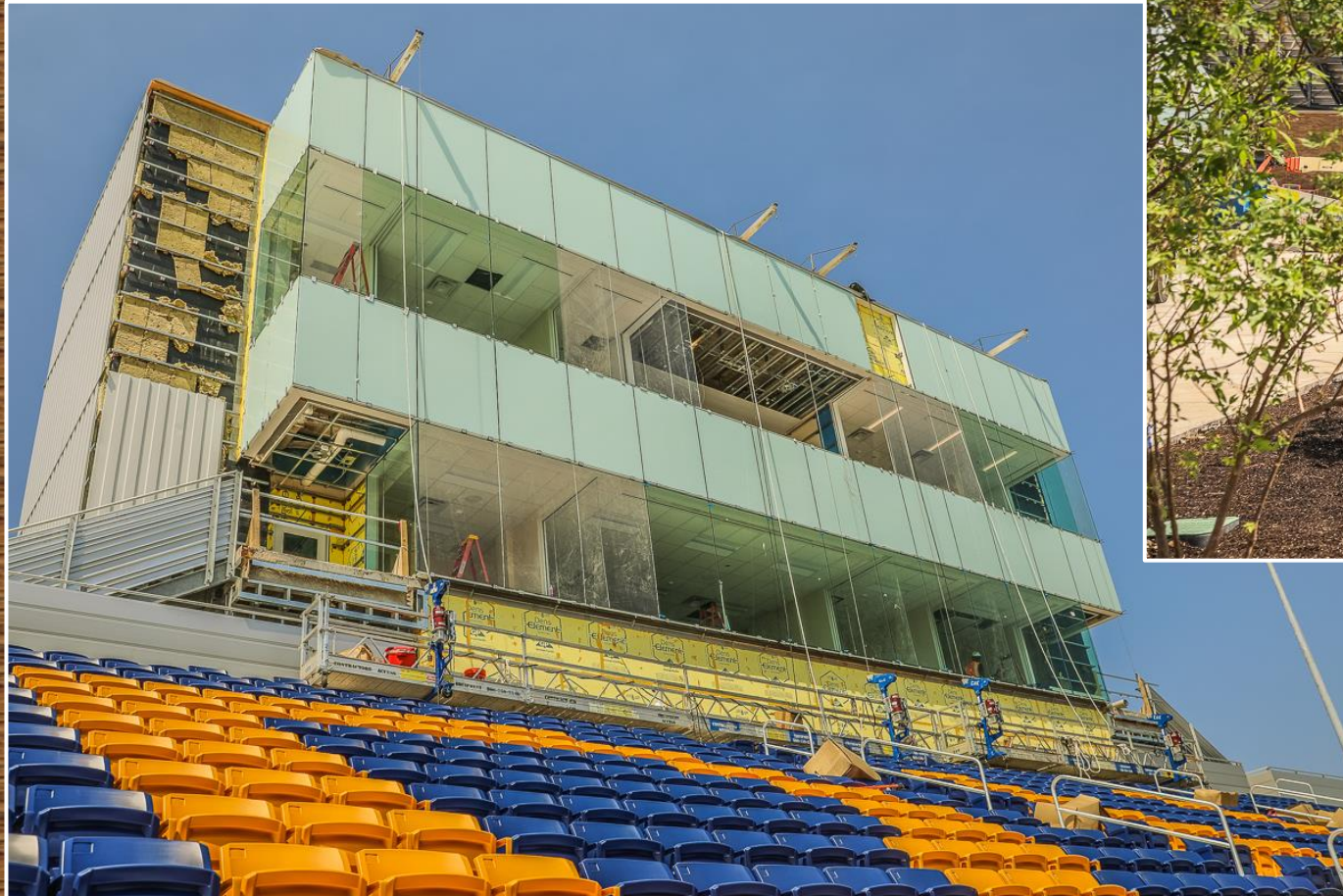
The steel structure installation over the Finance, Superintendent, and Operations suites is being installed.



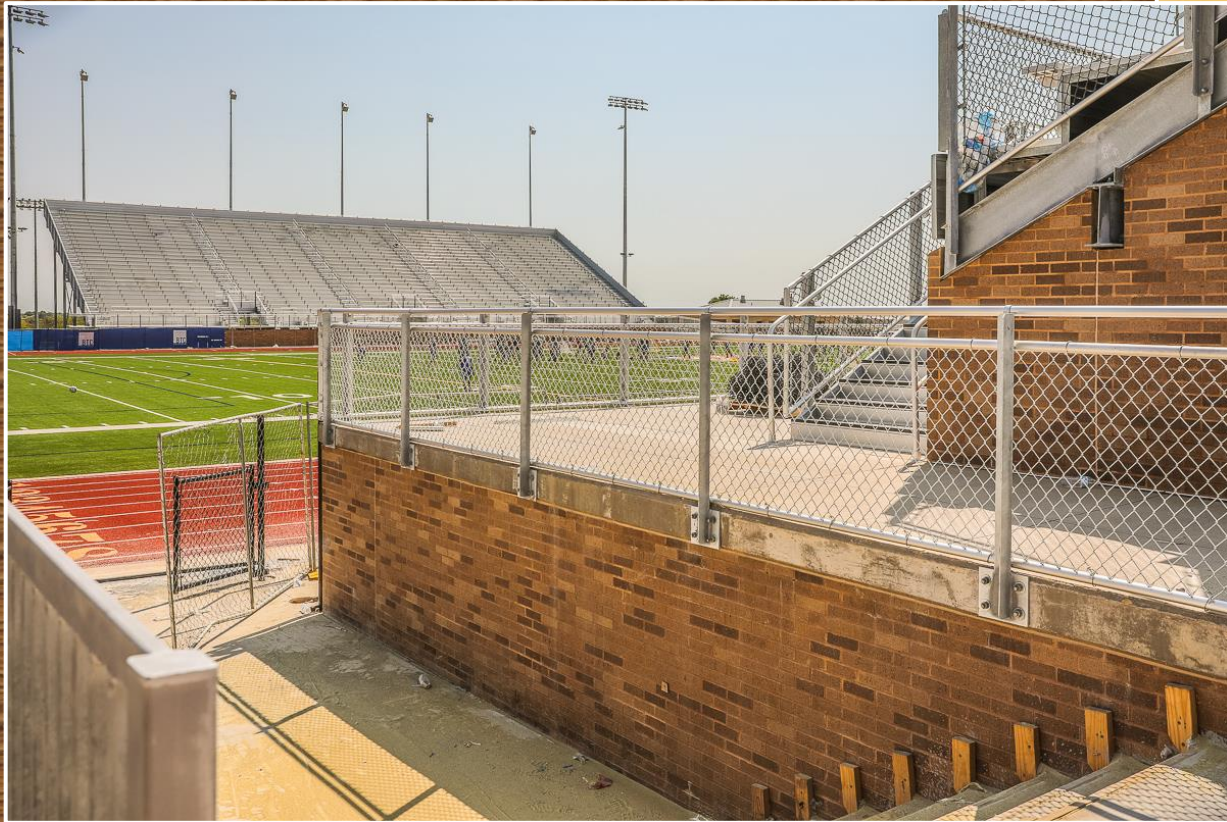
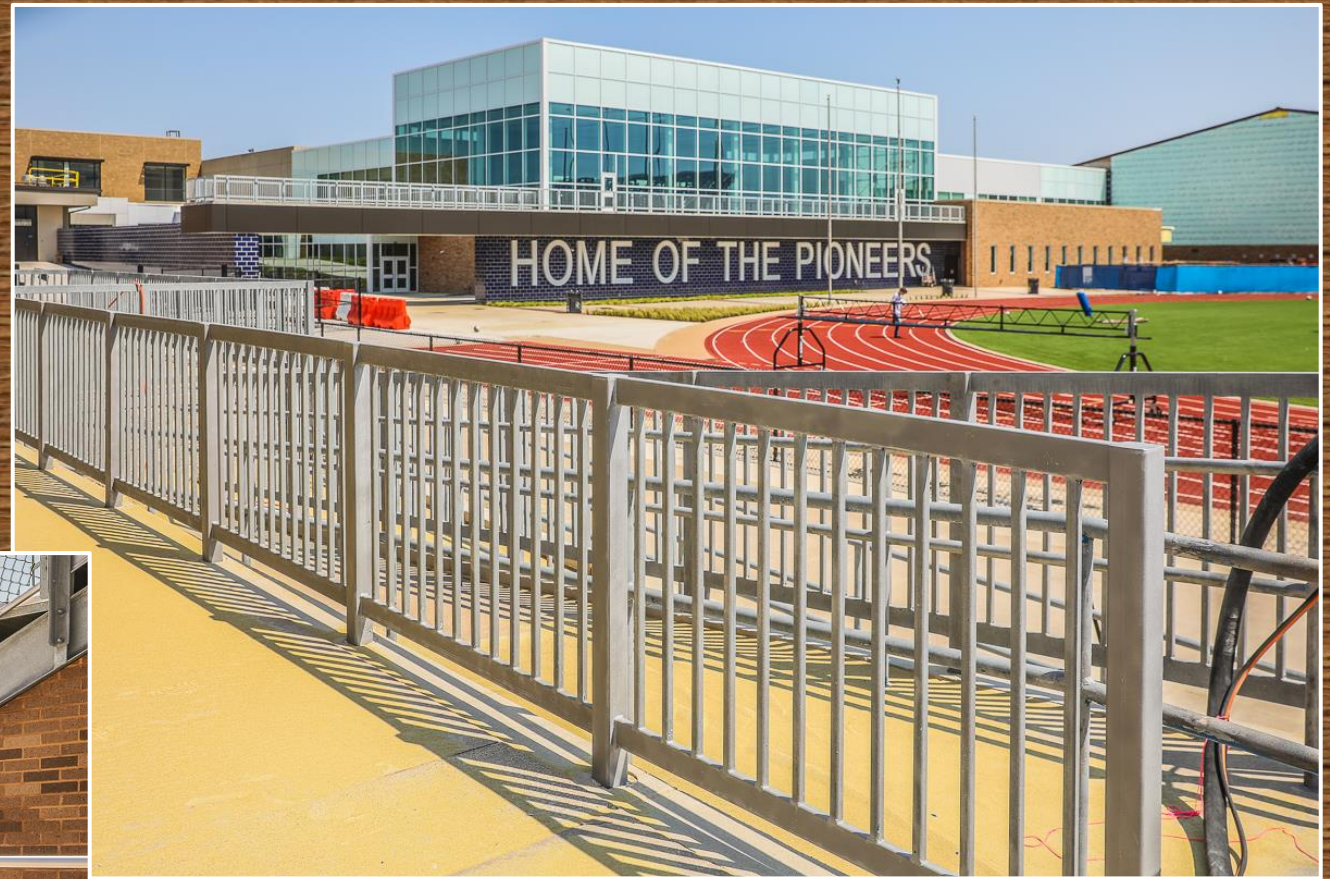
Photos represent exterior walls and concrete block construction for interior walls at the lower level.



# BOSWELL HS



The landscape is in progress. Grandstands still need brick wall and numerous glass panels.



Older handrails have been sand blasted, primed, and a gray finish applied to smooth out the railings. Fencing around grandstand continues to progress.



The bus parking lot has been striped and is ready for buses. Work continues in the pressbox.





**Hellas has started the interior turf installation. The brick has been completed and cleaned on the turf room.**





**Work continues on the monument sign.**



# BASEBALL/SOFTBALL PROJECTS



Hellas has begun turf installation at Chisholm Trail HS and will start soon at Saginaw HS.

